

ALADDIN

The Best
RURAL HOME LAMP
On Earth

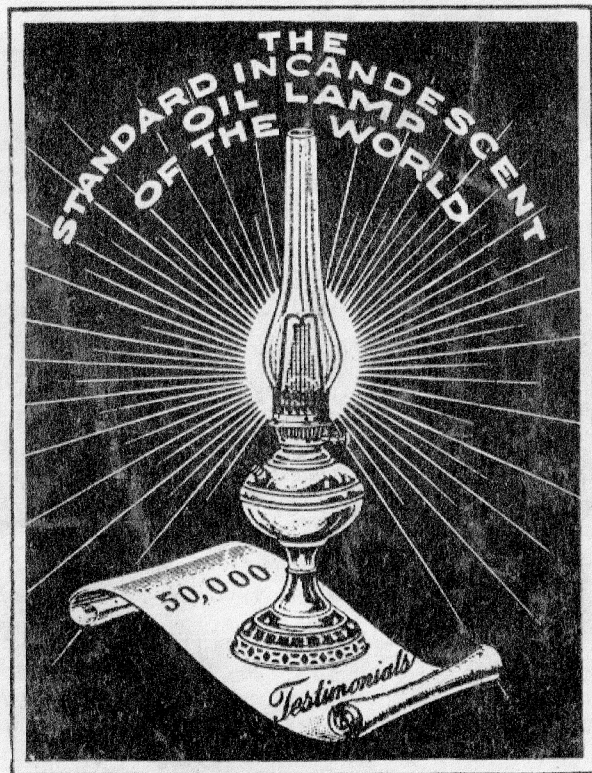
Do not take a substitute or
something similar—

Buy the one that is best by
test and best by comparison

FOR SALE BY

B. L. Roy

ALADDIN



THE MANTLE LAMP COMPANY
OF AMERICA

General Office - - CHICAGO, U. S. A.

BRANCHES

Portland, Oregon

Waterbury, Connecticut

Montreal, Canada

Winnipeg, Canada

A
Modern White Light
FROM
Kerosene (Coal Oil)

The advancement of civilization is written in the history of artificial lighting. With the discovery of electricity and its adaptation to indoor lighting by Edison and the invention of the incandescent gas mantle by Count Welsbach, most wonderful progress has been made in artificial illumination.

Like many other inventions for the convenience, benefit and advancement of mankind, the use of incandescent gas and electric light, on account of its high cost of installation, transmission and maintenance, is confined to towns and cities where the population is concentrated, thus benefiting in no way the rural population.

Necessity is the mother of invention, so with the improved lighting of the city homes by gas and electricity, a new necessity confronted the inventor and that was the need of an artificial light by the rural dweller which would put him on a par with his city brother. While for a number of years, lighting systems of various types and using various kinds of fuel, have been sold in the rural districts, nevertheless, their usage for numerous reasons have not become general. Since the introduction of kerosene (coal oil) over sixty years ago, the rural population has depended chiefly upon this fuel for light, recognizing its comparative safety and cheapness over all other illuminants.

With the invention of the ALADDIN Incandescent Oil Lamp, the lighting problem for rural homes was solved, as it produces from common coal oil (kerosene) a brilliant, powerful, white steady light, fully equal to city gas or electricity and without odor or noise. It is clean, simple, safe, durable and economical. It burns over fifty hours on one gallon of oil. It burns less oil than the ordinary open flame center draught oil lamp, in fact, will pay for its cost in oil saving in a comparatively short time.

Copyrighted 1911

*By The Mantle Lamp Company of America
Chicago, Ill.*

A Few of the Many Reasons why YOU Should Have an ALADDIN Lamp.

—Because it gives a light superior to any other oil lamp in existence—

—Because a good light is of vital importance in the home—it benefits every member of the household—

—Because women and children can operate it successfully—

—Because with its brilliant white light, evening reading, writing and sewing is made a pleasure—

—Because its light relieves eye strain and various disorders resulting therefrom—

—Because the eyesight of growing children is often impaired through studying by a poor light—

—Because it lights every portion of the room bringing out color and color schemes—

—Because its light is white and steady—not the reddish flickering light produced by the ordinary oil lamp—

—Because it burns without noise—it does not irritate the nervous—

—Because it is simple—has no complicated parts requiring the attention of an expert—

—Because it is durable—it is constructed entirely of brass—with ordinary care will last a life time—

—Because it is clean—reliable—

—Because it lights and extinguishes the same as the ordinary oil lamp with which everyone is familiar—

—Because it does for little money all that the dangerous and high priced lighting systems can do—

—Because it burns kerosene (coal oil)—the safest and most generally used illuminating fuel—

—Because it burns less kerosene (coal oil) than the ordinary center draught oil lamp—

—Because it pays for itself in a few months in the oil it saves and then keeps right on saving money—

—Because with every ALADDIN KoneKap mantle, a new burner cone is supplied free of charge—

—Because the ALADDIN is constructed on the center draught principle and uses a seamless wick, which assures a uniform supply of air and oil—

—Because every ALADDIN Lamp is guaranteed to be mechanically perfect—

—Because the ALADDIN is manufactured under the supervision of men who have had the advantage of thousands of dollars spent in experiments and who have devoted years of study to perfect a practical incandescent oil lamp—“THE ALADDIN”

—Because the ALADDIN is superior to any other incandescent oil burner or lamp in existence—

—Because the line is complete and you can select the one that will fit your purse or gratify your taste—

—Because thousands upon thousands of homes throughout the civilized world are using and recommending the ALADDIN—

—Because you cannot invest the same amount of money in anything that will give as much pleasure, comfort and elegance in the home—

—Because you owe it to yourself and family to have the best light, especially when it costs you less money than the poor one—



Patented in U. S. A., March 14, 1911
Patented in Canada, January 10, 1911

No. 150

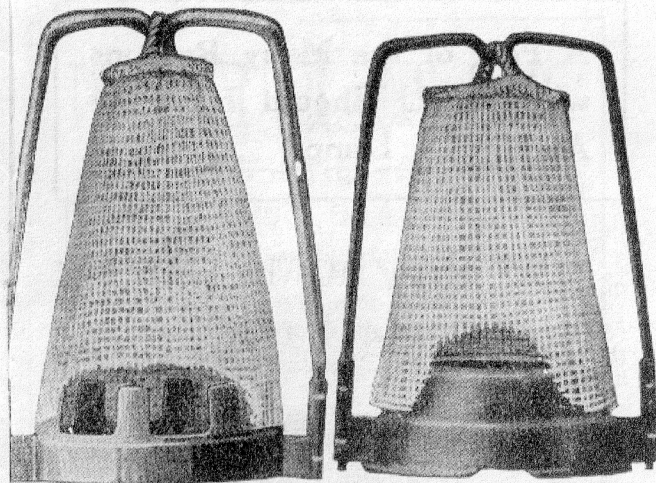
SUNBEAM BURNER

(Side Draught and KoneKap Mantle)

The demand for a cheap burner that is usable on the ordinary lamp is so great that we have provided the SUNBEAM Burner and have given it every advantage possible in a side draught burner. The SUNBEAM is made entirely of brass, uses the same mantle and chimney and burns with all the brilliancy and oil saving of the ALADDIN lamp. It fully meets the requirements for a low-price, incandescent burner, and is emphatically the best side draught burner on the market. It will fit any No. 3 (D) collar, solid bowl, flat wick lamp, and by attaching expander, (not recommended), it may be used on the same style No. 2 (B) collar lamps. The SUNBEAM cannot be used on center draught lamps.

Finished in Polished Brass or Nickel. Complete with flat wick, KoneKap mantle and chimney.

Price \$2.75



Patented in U. S. A., March 14, 1911
Patented in Canada, January 10, 1911

**ALADDIN CAP
MANTLE**

For use on Model No. 1
and Model No. 2 Aladdin
Lamps and Model No. 1
Sunbeam Burners.

Price 25 Cents

**ALADDIN KONEKAP
MANTLE**

For use on Model No. 3
Aladdin Lamps and Model
No. 3 Sunbeam Burners.

Price 25 Cents

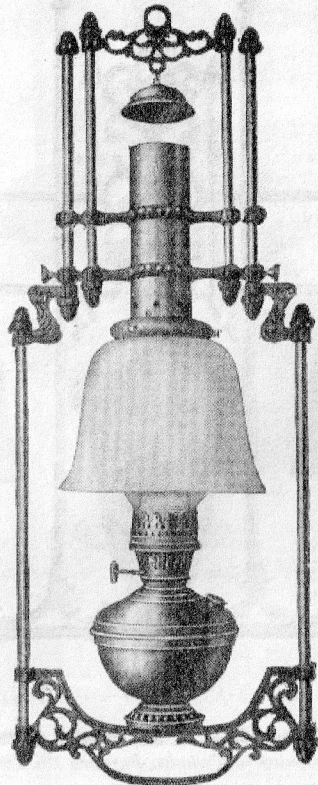
[NOTE—Where consumers are unable to secure mantles from our agents or dealers, same will be sent direct from any of our offices, prepaid by mail or express at the above price in packages of 4, 6 or 12. Remit by Bank Draft, P. O. or Express Money Order.]

We manufacture a complete line of Incandescent Mantles for Kerosene Mantle Lamps.]

ALADDIN CHIMNEY

A 12½-inch high-grade chimney, shaped and proportioned for use on Aladdin Lamps and Sunbeam Burners.

Price 25 Cents



Patented in U. S. A., March 14, 1911
Patented in Canada, January 10, 1911

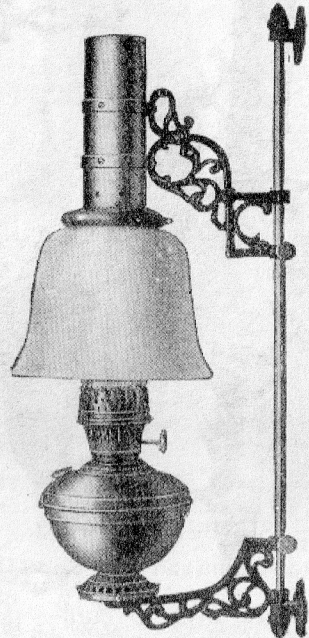
No. 113

ALADDIN HANGING LAMP

(Center Draught and KoneKap Mantle)

This fixture has the special features of extension shade holder and adjustable draught. It carries our special shade No. 205 or Art Glass Shade No. 206 and Store Fount No. 102. The fixture is made of iron, finished in old gold and ebony color only, and is not sold without shade. Complete as shown with shade No. 205, Store Lamp No. 102 with seamless wick, KoneKap Mantle and chimney.

Price \$10.50. With Art Shade No. 206, \$12.00



Patented in U. S. A., March 14, 1911
Patented in Canada, January 10, 1911

No. 114

ALADDIN BRACKET LAMP

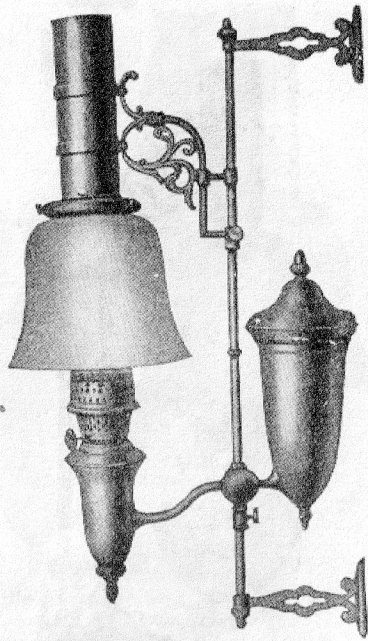
(Center Draught and KoneKap Mantle)

This fixture has the special features: Extension shade-holder and adjustable draught. It carries our special shade No. 205 or No. 206, and Store Fount No. 102. The fixture is made of iron finished in old gold and ebony color (only) and is not sold without shade. It is our most desirable, medium priced wall fixture for those who desire a fixed light.

Complete as shown with Shade No. 205 and Lamp No. 102 with seamless wick, KoneKap mantle and chimney.

Price \$8.50

Price, with Art Shade No. 206, \$10.00



Patented in U. S. A., March 14, 1911
Patented in Canada, January 10, 1911

No. 111

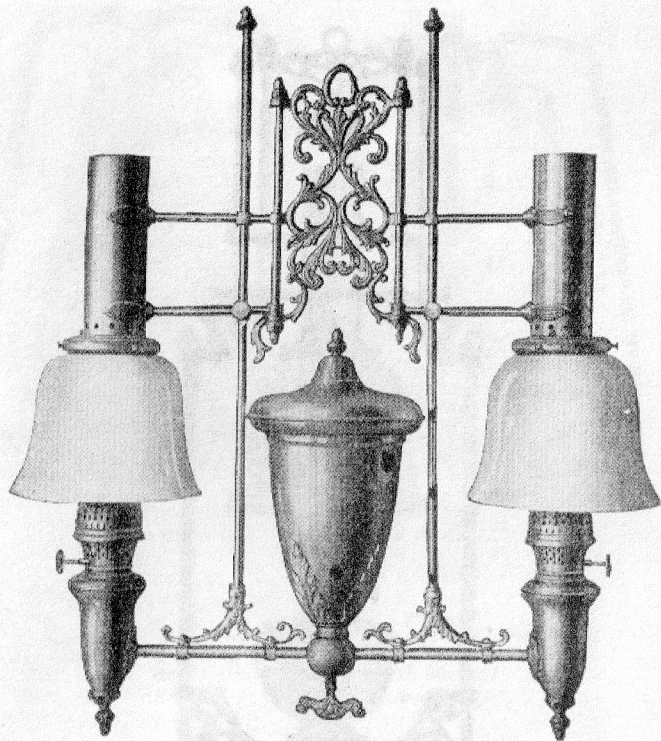
ALADDIN WALL LAMP

(Center Draught and KoneKap Mantle)

This lamp is made entirely of heavy brass, finished in Old English (only). It has all the features of the Aladdin Student Lamp; extension shade-holder, adjustable draught and removable inverted oil tank and swings on central rod. This is the only wall (or bracket) lamp on the market that uses the inverted oil tank. It is specially designed for side lamp in home, church, office or lodge room and like No. 110, it has no equal for elegance and reliability. Complete as shown with seamless wick, KoneKap Mantle, chimney and No. 205 shade. (Not sold without shade.)

Price \$15.00

Price, with Art Shade No. 206, \$16.50



Patented in U. S. A., March 14, 1911
Patented in Canada, January 10, 1911

No. 112

ALADDIN CHANDELIER

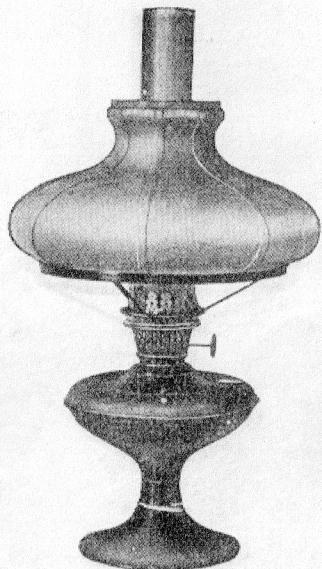
(Double Lamp)

(Center Draught and KoneKap Mantle)

Made entirely of heavy brass, finished in Old English (only). This lamp has the characteristic features of the Student Lamp, No. 110; extension shade-holder, adjustable draught and removable, inverted oil tank carrying enough oil for both lamps for 20 hours continuous burning.

This lamp is designed especially for large rooms and churches and when used in connection with Wall Lamp, No. 111 and Student (or pulpit) Lamp No. 110, it makes a complete system of inverted tank lamps that has never been equalled for lodge rooms, stores, hotels and churches. Complete as shown with seamless wicks, KoneKap mantles, chimneys and our exclusive shades, No. 205. (Not sold without shades.)

Price \$25.00. With Art Shades, No. 206, \$28.00



Patented in U. S. A., March 14, 1911
Patented in Canada, January 10, 1911

No. 109B

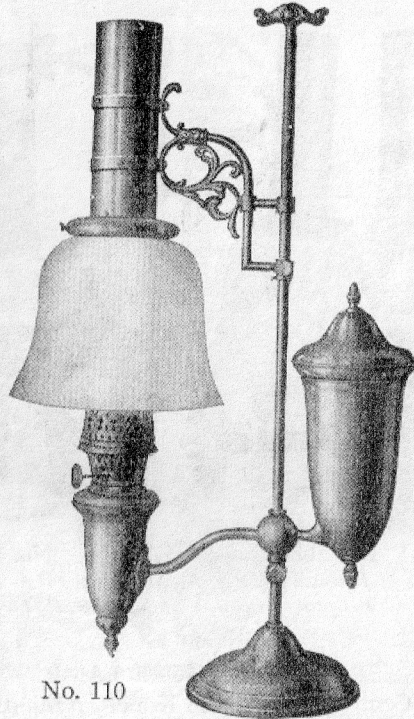
ALADDIN PARLOR LAMP

(Center Draught and KoneKap Mantle)

Made of heavy brass, Colonial Style, Old English or Japanese Bronze finish.

Same as 109A, excepting that it is furnished with our special Green Cased Shade. This shade darkens the upper part of the room and is especially desirable for use where intense light is required on the table without regard to lighting up the room. It is ideal for reading table in connection with electric or other lighting systems. Complete as shown with seamless wick, KoneKap mantle, chimney 10-inch Shade ring and No. 204 Shade.

Price \$7.00



No. 110

Patented in U. S. A., March 14, 1911
Patented in Canada, January 10, 1911

ALADDIN STUDENT LAMP

(Center Draught and KoneKap Mantle)

This lamp has many exclusive features found only on Aladdin Lamps: Extension shade holder, adjustable draught and removable oil tank.

The extension shade holder permits the shade to be set at any desired height. It also gives to the lamp a symmetrical and balanced appearance, fully equal to the finest modern gas and electric fixtures.

The adjustable draught makes the lamp suitable for public places where it is required to burn for many hours with little or no attention.

The removable oil tank makes it easy and convenient to refill while the inverted feed keeps the oil at the maximum level around the wick until it is all used up.

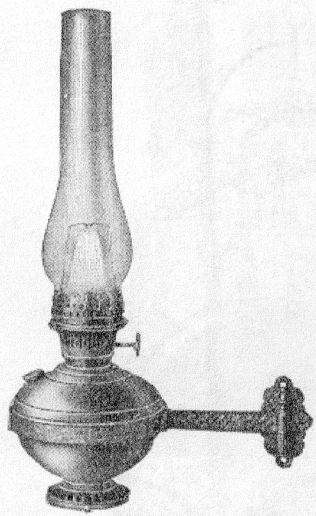
For elegance of design and reliability of action, there is no oil lamp in the world that can compare with this one. It is the ideal lamp for offices, libraries, lodge rooms and pulpits. It is made entirely of brass, finished in Old English (only) and is fit for the finest homes. Complete as shown with seamless wick, KoneKap mantle, chimney and our own special design shade, No. 205. (It is not sold without shade.)

Price, \$15.00. With Art Shade No. 206, \$16.50

29%

26 1/2

42 1/2



No. 102C

*Patented in U. S. A., March 14, 1911
Patented in Canada, January 10, 1911*

No. 102C

ALADDIN STORE LAMP

(Center Draught and KoneKap Mantle)

This lamp is made entirely of brass, finished in Polished Brass or Nickel. Same as No. 102 with addition of bracket. Complete as shown with seamless wick, KoneKap mantle, chimney and bracket.

Price \$4.50

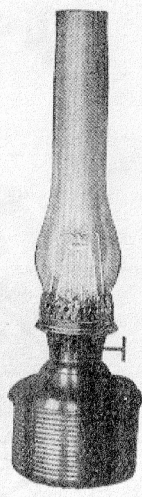
No. 106

ALADDIN OIL POT

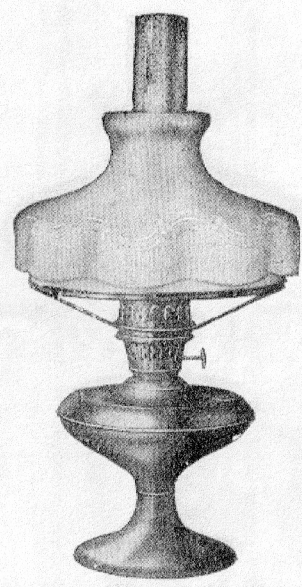
(Center Draught and KoneKap Mantle)

The universal oil pot is 5 inches in diameter and 3 1/4 inches deep (below the rim). It is specially intended for fancy vase stands and will also fit hanging lamp fixtures that are provided with a vase for center draught oil pot of standard size. Made entirely of brass, finished in Polished Brass only. Complete with seamless wick, KoneKap mantle and chimney.

Price \$4.00



No. 106



*Patented in U. S. A., March 14, 1911
Patented in Canada, January 10, 1911*

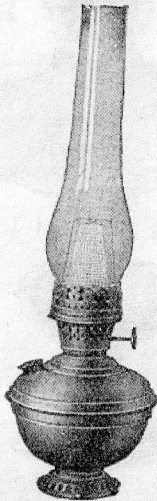
No. 109A

ALADDIN PARLOR LAMP

(Center Draught and KoneKap Mantle)

This lamp, is made of heavy brass in Colonial Style, finished in Old English or Japanese Bronze. It is furnished with our Special Opal Shade No. 201. This shade in combination with the Old English finish makes a beautiful, medium priced parlor lamp, suitable for any home where the lighting of the upper part of the room is desirable. Complete with seamless wick, KoneKop mantle, chimney, 10 inch shade ring and shade No. 201.

Price \$6.00



*Patented in U. S. A., March 14, 1911
Patented in Canada, January 10, 1911*

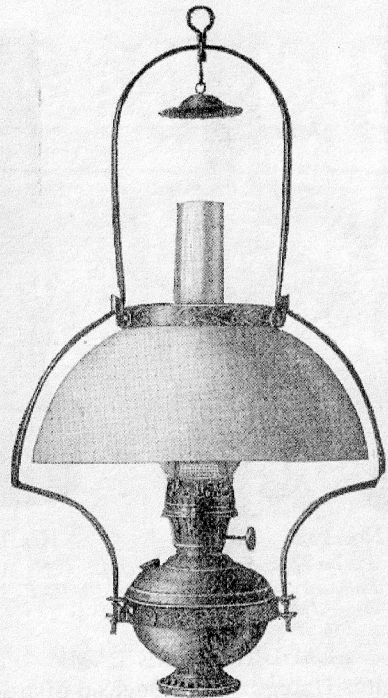
No. 102

ALADDIN STORE LAMP

(Center Draught and KoneKap Mantle)

This lamp is usable in Harp and Bell and Bracket; also in No. 114 Aladdin Bracket and No. 113 Aladdin Hanging Lamp. Made entirely of brass, finished in Polished Brass or Nickel. Complete as shown with seamless wick, KoneKap mantle and chimney.

Price \$4.00



*Patented in U. S. A., March 14, 1911
Patented in Canada, January 10, 1911*

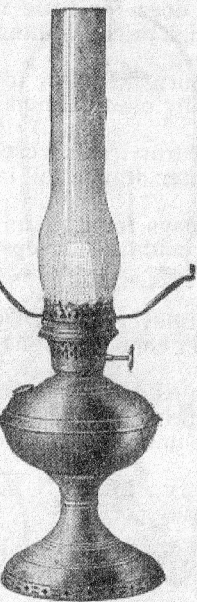
No. 102B

ALADDIN STORE LAMP

(Center Draught and KoneKap Mantle)

Same as No. 102. Made entirely of brass, finished in Polished Brass or Nickel. Complete as shown with seamless wick, KoneKap mantle, chimney, harp and bell, harp crown and 14 inch opal dome shade No. 203.

Price \$5.50



*Patented in U. S. A., March 14, 1911
Patented in Canada, January 10, 1911*

No. 101

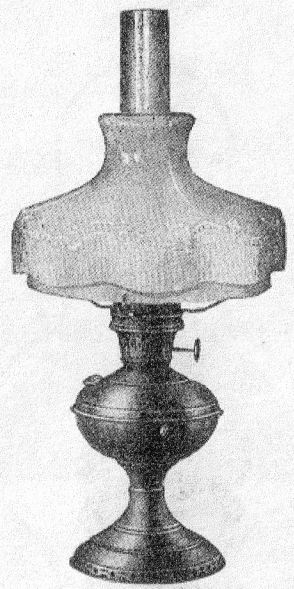
ALADDIN TABLE LAMP

(Center Draught and KoneKap Mantle)

This is an ideal general purpose lamp; is easily carried from room to room; can be temporarily placed in the harp as a hanging lamp for dining room or kitchen. Made entirely of brass, finished in polished Brass or Nickel Plate. The nickel finish is preferable for general use.

Complete as shown with seamless wick, KoneKap mantle, chimney and tripod.

Price \$4.50



*Patented in U. S. A., March 14, 1911
Patented in Canada, January 10, 1911*

No. 101A

ALADDIN TABLE LAMP

(with Shade)

(Center Draught and KoneKap Mantle)

This lamp is the same as No. 101. It is complete as shown with seamless wick, KoneKap mantle, chimney and shade No. 201, which makes a beautiful lamp for living room or library. The opal shade (our own exclusive pattern) does not darken the upper part of the room but gives a mild, soft light, suitable for aged or weak eyes while the reflected light below the shade is intense and suitable for reading or work that requires a strong light. Polished Brass is preferable for library or drawing room. Made entirely of brass, finished in Polished Brass or Nickel.

Price \$5.00